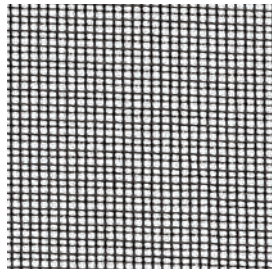


Zulu 2

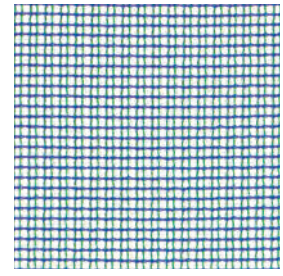
kvadrat



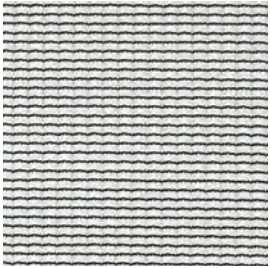
104



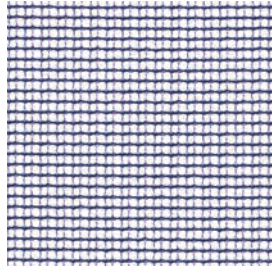
194



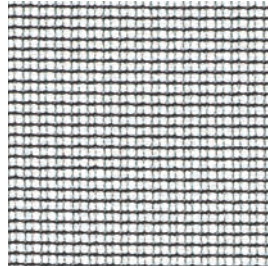
772



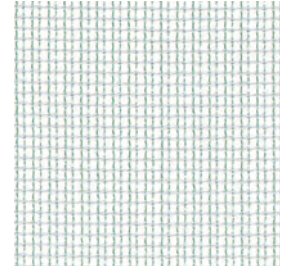
154



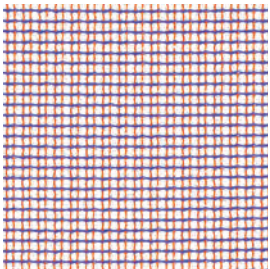
792



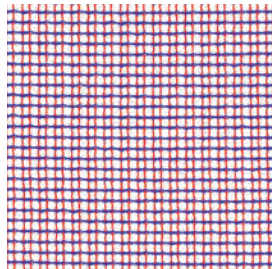
992



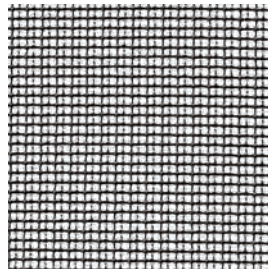
902



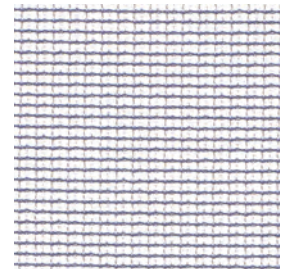
662



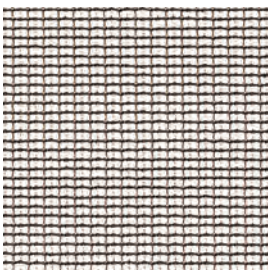
672



174



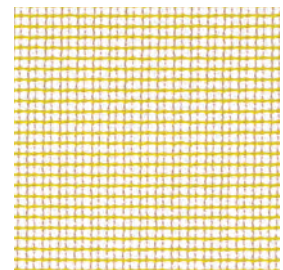
732



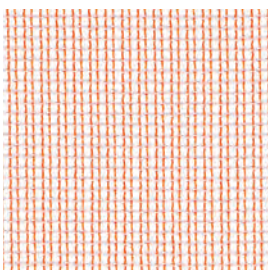
654



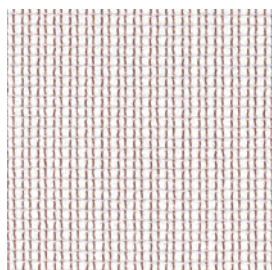
134



452



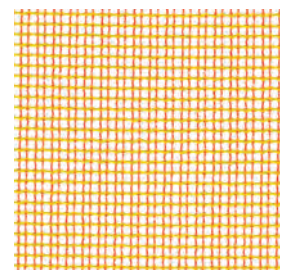
602



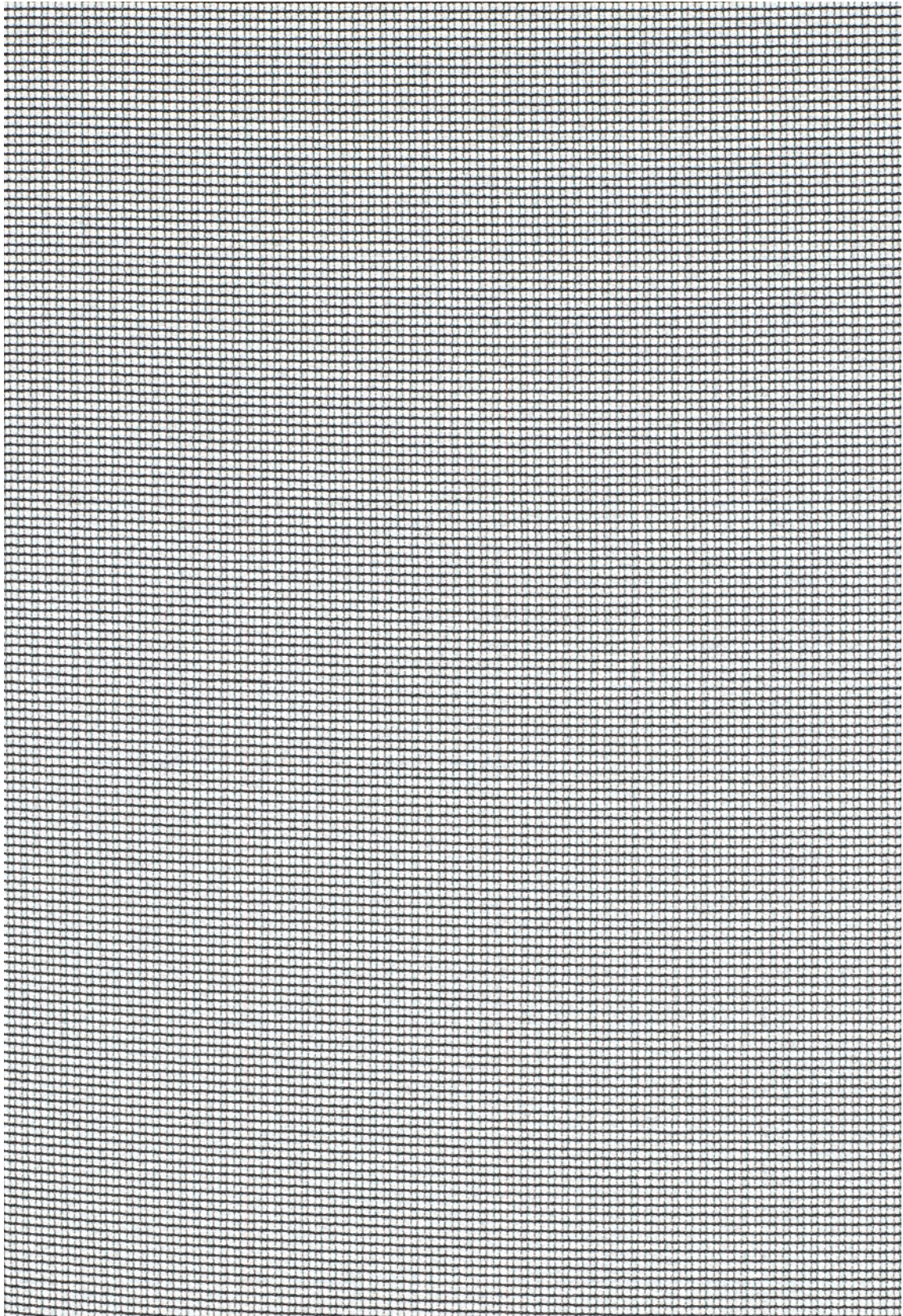
202



234



472



Zulu 2

Designed by Giulio Ridolfo

DK

Anvendelse Gardiner.

Beskrivelse 100% Trevira CS. Bredde ca. 300 cm. Vægt ca. 300 g/lbm. Garnfarvet.

Nuanceforskelle kan forekomme.

Lysægtighed (ISO) 7. **Lystransmission** (DIN EN 410) 54-68%. **Flammesikring:** AS/NZS 1530.3. BS 5867 part 2 type B. DIN 4102 B1. EN 13773 Class 1. FAR 25.853. IMO FTP Code 2010:Part 7. JIS L 1091 A-1 D. NF P 92 507 M1. NFPA 701. SN 198 898 5.2. UNI 9177 Classe 1. (Kopi af testrapport kan rekvireres).

Vedligeholdelse Se ISO symboler. Halv vaskefyldte. Krypning ca. 1% ved vask 40°C. Desinfektion, se www.kvadrat.dk.

UK/US

Application Curtains.

Description 100% Trevira CS. Width app. 118 inches (300 cm). Weight app. 9.6 oz/ly (300 g/lin.m). Yarn dyed. Colour differences may occur.

Lightfastness (ISO) 7. **Light transmission** (DIN EN 410) 54-68%. **Flame resistance:** AS/NZS 1530.3. BS 5867 part 2 type B. DIN 4102 B1. EN 13773 Class 1. FAR 25.853. IMO FTP Code 2010:Part 7. JIS L 1091 A-1 D. NF P 92 507 M1. NFPA 701. SN 198 898 5.2. UNI 9177 Classe 1. (Copy of test report available).

Care Please see the ISO symbols. Half wash load. Shrinkage app. 1% when washed at 40°C. Disinfection, see www.kvadrat.dk.

DE

Anwendungsbereich Vorhang.

Beschreibung 100% Trevira CS. Breite ca. 300 cm. Gewicht ca. 300 g/lfd.m. Garngefärbt.

Farbunterschiede können vorkommen.

Lichtechtheit (ISO) 7. **Lichttransmission** (DIN EN 410) 54-68%. **Flammenschutz:** AS/NZS 1530.3. BS 5867 part 2 type B. DIN 4102 B1. EN 13773 Class 1. FAR 25.853. IMO FTP Code 2010:Part 7. JIS L 1091 A-1 D. NF P 92 507 M1. NFPA 701. SN 198 898 5.2. UNI 9177 Classe 1. (Kopie von Prüfungsbericht verfügbar).

Pflege Siehe ISO Pflegesymbole. Waschmaschine halb gefüllt. Wascheinlauf ca. 1% bei 40°C. Desinfektion, siehe www.kvadrat.dk.

NL

Toepassing Gordijnen.

Omschrijving 100% Trevira CS. Breedte ca. 300 cm. Gewicht ca. 300 gr/str. m.

Garengeverfd. Kleurverschillen kunnen optreden.

Lichtechtheid (ISO) 7. **Lichtdoorlatenheid** (DIN EN 410) 54-68%. **Brandvrijheid:** AS/NZS 1530.3. BS 5867 part 2 type B. DIN 4102 B1. EN 13773 Class 1. FAR 25.853. IMO FTP Code 2010:Part 7. JIS L 1091 A-1 D. NF P 92 507 M1. NFPA 701. SN 198 898 5.2. UNI 9177 Classe 1. (Op aanvraag sturen wij U graag een kopie van het testrapport toe).

Onderhoud Zie de ISO symbolen.

Wasbelading half. Krimp ca. 1% bij 40°C. Desinfectie, www.kvadrat.dk.

FR

Domaine d'utilisation Rideaux.

Description 100% Trevira CS. Largeur env. 300 cm. Poids env. 300 g/ml. Teinture sur fil. Ecart des coloris possibles.

Résistance à la lumière (ISO) 7. **Transparence** (DIN EN 410) 54-68%. **Normes au feu:** AS/NZS 1530.3. BS 5867 part 2 type B. DIN 4102 B1. EN 13773 Class 1. FAR 25.853. IMO FTP Code 2010:Part 7. JIS L 1091 A-1 D. NF P 92 507 M1. NFPA 701. SN 198 898 5.2. UNI 9177 Classe 1. (La copie du compte rendu des tests est disponible sur demande).

Entretien Voir les symboles ISO. Machine: demi-charge. Rétrécissement: Env. 1% pour lavage à 40°C. Désinfection, voir www.kvadrat.dk.

IT

Destinazione d'uso Tende.

Caratteristiche 100% Trevira CS. Altezza circa 300 cm. Peso circa 300 gr/ml. Tinto in filo. Possibili differenze per colore.

Resistenza alla luce (ISO) 7. **Trasmissione della luce** (DIN EN 410) 54-68%. **Ignifugazione:** AS/NZS 1530.3. BS 5867 part 2 type B. DIN 4102 B1. EN 13773 Class 1. FAR 25.853. IMO FTP Code 2010:Part 7. JIS L 1091 A-1 D. NF P 92 507 M1. NFPA 701. SN 198 898 5.2. UNI 9177 Classe 1. (Disponibile copia del test).

Manutenzione Per favore seguire simboli ISO. Lavaggio a mezzo carico. Restringimento 1% con lavaggio a 40°C. Per disinfettare, vedi il sito www.kvadrat.dk.

ES

Aplicación Cortinas.

Descripción 100% Trevira CS. Anchura aprox. 300 cm. Peso aprox. 300 gr/ml. Hilo teñido.

Posibles variaciones de color.

Resistencia a la luz (ISO) 7.

Transparencia (DIN EN 410) 54-68%.

Resistencia al fuego: AS/NZS 1530.3. BS 5867 part 2 type B. DIN 4102 B1. EN 13773 Class 1. FAR 25.853. IMO FTP Code 2010:Part 7. JIS L 1091 A-1 D. NF P 92 507 M1. NFPA 701. SN 198 898 5.2. UNI 9177 Classe 1. (Copia del informe de ensayos disponible).

Mantenimiento Consulte los símbolos ISO. Lavar a media carga. Encogimiento aprox. un 1% en lavado a 40°C. Desinfección, visita www.kvadrat.dk.

JP

用途 カーテン。

詳細 100% トレヴィラ CS。幅：約 300 cm。重量：1 m あたり約 300 g。糸染め。多少の色差がでることがあります。

対光堅牢度: (ISO) 7. **光透過性** (DIN EN 410)

54-68%。 **防火性:** AS/NZS 1530.3. BS 5867

part 2 type B. DIN 4102 B1. EN 13773 Class

1. FAR 25.853. IMO FTP Code 2010:Part 7.

JIS L 1091 A-1 D. NF P 92 507 M1. NFPA 701.

SN 198 898 5.2. UNI 9177 Classe 1. (テストレポ

ートのコピー入手可能。)

手入れ

ISO シンボル参照。一度の洗濯量を容量の半分に抑えること。40°C で洗濯した場合の縮み約 1%。消毒について? www.kvadrat.dkまで参照ください。

CN

适用范围 窗帘。

成分 100%德国阻燃丝(Trevira CS)。幅宽约118英寸(300 cm)。重量约300克/延米。纱线染色面料。颜色可能稍有价差。

光照色牢度 (ISO) 7. **透光度** (DIN EN 410)

54-68%。 **阻燃性:** AS/NZS 1530.3. BS 5867 part

2 type B. DIN 4102 B1. EN 13773 Class 1. FAR

25.853. IMO FTP Code 2010:Part 7. JIS L 1091

A-1 D. NF P 92 507 M1. NFPA 701. SN 198 898

5.2. UNI 9177 Classe 1. (可提供测试报告副本)。

维护 请参照ISO标志。洗涤时洗衣机勿放太满，于温

度40°C清洗时，面料缩水率约1%。消毒请参阅

www.kvadrat.dk。



10 year warranty



Quality and environmental system accreditation according to ISO 9001 and ISO 14001.

*ACT® Registered Certification Marks

Contact and further information www.kvadrat.dk

US contact info: 1-800-620-9309