

Divina 3

kvadrat

Divina 3



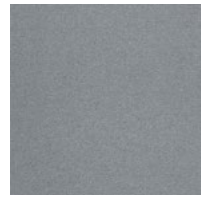
684



691



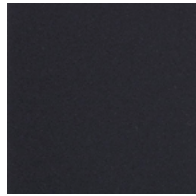
171



173



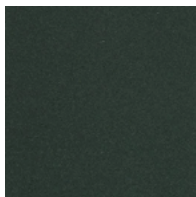
676



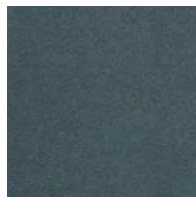
191



154



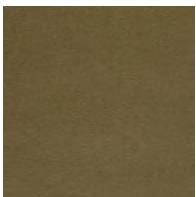
384



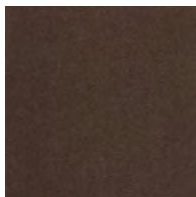
181



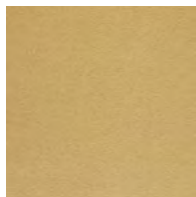
426



356



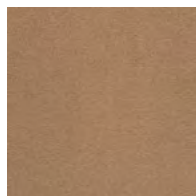
393



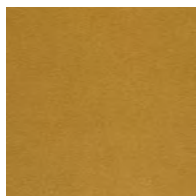
236



224



334



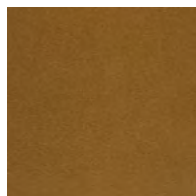
246



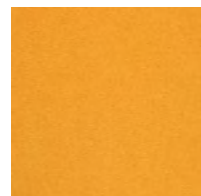
462



106

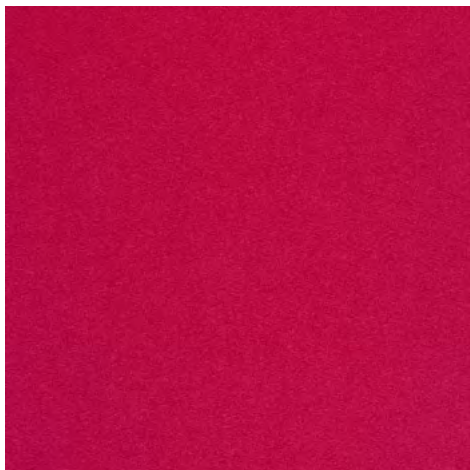


346

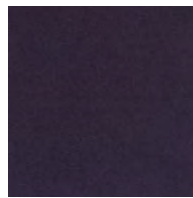


444

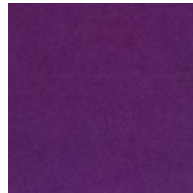
Divina 3



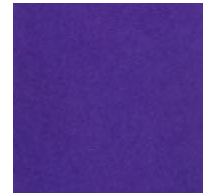
636



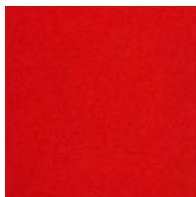
376



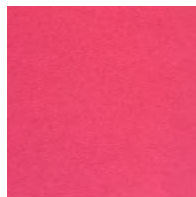
696



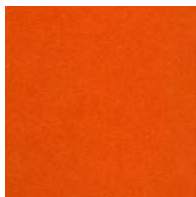
692



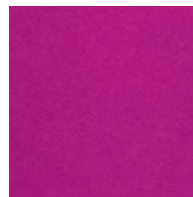
623



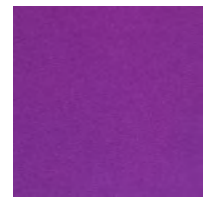
626



562



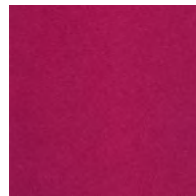
662



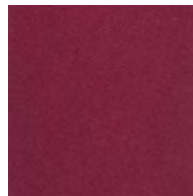
666



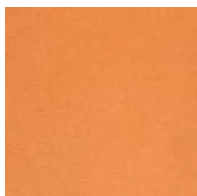
542



652



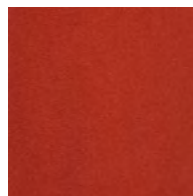
671



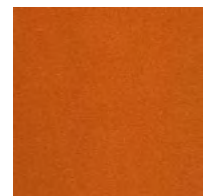
526



536

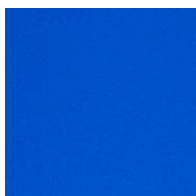


584

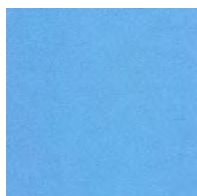


552

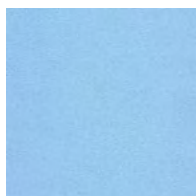
Divina 3



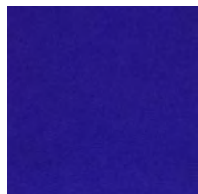
756



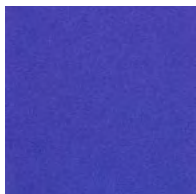
742



712



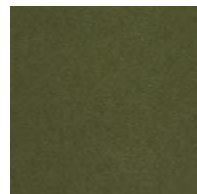
686



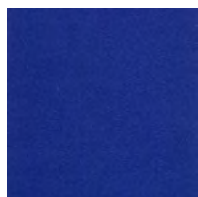
782



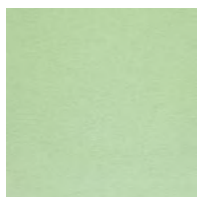
944



984



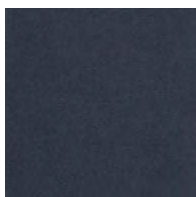
791



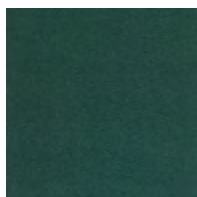
846



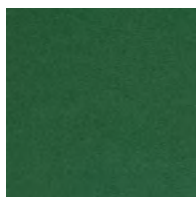
856



793



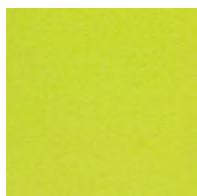
886



876



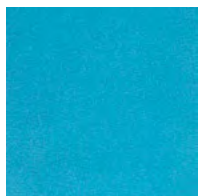
893



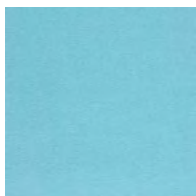
936



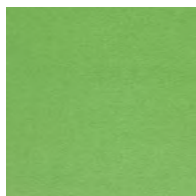
922



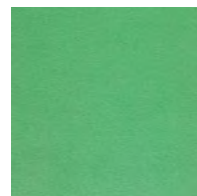
826



836



956



966

Divina 3

Designed by Finn Sködt

DK

Anvendelse Kontorer, hoteller, institutioner, private indretninger.

Beskrivelse 100% ny uld. Bredder ca. 150 cm. Vægt ca. 840 g/lbm. Stykfarvet. I lyse farver kan fremmede fibre forekomme. Nuanceforskelle kan forekomme.

Ægkant ↔

Slidstyrke: Ca. 45.000 slidbevægelser efter Martindale metoden EN ISO 12947. **Lysægthed** (ISO) 5-7. **Pilling** (EN ISO) 3. **Gnidægthed** (ISO) tør 4-5, våd 3-5. **Lydsabsorption** (EN ISO 354) 0.60/Class C (fladt), 0.70/Class C (foldet).

Airflow 678 Pa s/m. **Flammesikring:** AS/NZS 1530.3. BS 5852 Crib 5. BS 5852 Part 1. BS 5867 Part 2 Type B. EN 1021-1/2. EN 13501, C-s1, d0 limet. GB 50222 med flammesikring. IMO FTP Code 2010:Part 8. NF D 60 013. NFPA 260. SN 198 898 5.3 med flammesikring. UNI 9175 11M. US Cal. Bull. 117-2013. ÖNORM B1 / Q1. (Kopi af testrapport kan rekvireres).

Vedligeholdelse Se ISO symboler. Strygning uden damp.

UK/US

Application Offices, hotels, institutions, domestic use.

Description 100% new wool. Width app. 59 inches (150 cm). Weight app. 27.0 oz/ly (840 g/lin.m). Piece dyed. Foreign fibres may occur in light colours. Colour differences may occur.

Selvedge/Direction ↔

Abrasion: App. 45,000 rubs acc. to the Martindale method EN ISO 12947.

Lightfastness (ISO) 5-7. **Pilling** (EN ISO) 3.

Fastness to rubbing (ISO) dry 4-5, wet 3-5.

Sound absorption (EN ISO 354) 0.60/Class C (flat), 0.70/Class C (waved). **Airflow** 678 Pa s/m.

Flame resistance: AS/NZS 1530.3. BS 5852 Crib 5. BS 5852 Part 1. BS 5867 Part 2 Type B. EN 1021-1/2. EN 13501, C-s1, d0 adhered. GB 50222 with treatment. IMO FTP Code 2010:Part 8. NF D 60 013. NFPA 260. SN 198 898 5.3 with treatment. UNI 9175 11M. US Cal. Bull. 117-2013. ÖNORM B1 / Q1. (Copy of test report available).

Care Please see the ISO symbols. Iron without steam.

DE

Anwendungsbereich Büros, Hotels, Objectbereich, privaten Wohnbereich.

Beschreibung 100% Schurwolle. Breite ca. 150 cm. Gewicht ca. 840 g/lfd.m. Stückgefärbt. In hellen Farben können Fremdfasern vorkommen. Farbunterschiede können vorkommen.

Webkant ↔

Scheuerfestigkeit: Ca. 45.000 Scheuerhübe gemäss der Martindale Methode EN ISO 12947. **Lichtechtheit** (ISO) 5-7. **Pilling** (EN ISO) 3. **Reibechtheit** (ISO) trocken 4-5, nass 3-5.

Schallabsorption (EN ISO 354) 0.60/Class C (glatt), 0.70/Class C (gefaltet). **Airflow** 678 Pa s/m. **Flammenschutz:** AS/NZS 1530.3. BS 5852 Crib 5. BS 5852 Part 1. BS 5867 Part 2 Type B. EN 1021-1/2. EN 13501, C-s1, d0 verklebt. GB 50222 mit Ausrüstung. IMO FTP Code 2010:Part 8. NF D 60 013. NFPA 260. SN 198 898 5.3 mit Ausrüstung. UNI 9175 11M. US Cal. Bull. 117-2013. ÖNORM B1 / Q1. (Kopie von Prüfungsbericht verfügbar).

Pflege Siehe ISO Pflegesymbole. Ohne Dampf bügeln.

NL

Toepassing Kantoren, hotels, instellingen, de privéfeer.

Omschrijving 100% scheerwol. Breedte ca. 150 cm. Gewicht ca. 840 g/str. m. Stukgeverfd. Afwijkende vezels kunnen voorkomen in lichte kleuren. Kleurverschillen kunnen optreden.

Zelfkant ↔

Slijtvastheid: Ca. 45.000 toeren Martindale EN ISO 12947. **Lichtechtheid** (ISO) 5-7. **Pilling** (EN ISO) 3. **Wrijftechtheid** (ISO) droge 4-5, natte 3-5. **Geluidsabsorptie** (EN ISO 354) 0.60/Class C (vlak), 0.70/Class C (geplooid). **Airflow** 678 Pa s/m. **Brandwerendheid:** AS/NZS 1530.3. BS 5852 Crib 5. BS 5852 Part 1. BS 5867 Part 2

Type B. EN 1021-1/2. EN 13501, C-s1, d0 gelijmd. GB 50222 met behandeling. IMO FTP Code 2010:Part 8. NF D 60 013. NFPA 260. SN 198 898 5.3 met behandeling. UNI 9175 11M. US Cal. Bull. 117-2013. ÖNORM B1 / Q1. (Op aanvraag sturen wij u graag een kopie van het testrapport toe).

Onderhoud Zie de ISO symbolen. Zonder stoom strijken.

FR

Domaine d'utilisation Tissu d'ameublement pour aménagement privé et public.

Description 100% laine vierge. Largeur env. 150 cm. Poids env. 840 g/m lg. Teinture à la pièce. Dans les couleurs claires, présence de fibres étrangères. Ecart des coloris possibles.

Lisière ↔

Résistance à l'abrasion: Env. 45.000 révolutions selon le procédé Martindale EN ISO 12947. **Résistance à la lumière** (ISO) 5-7.

Boulochage (EN ISO) 3. **Résistance au frottement** (ISO) sec 4-5, mouillé 3-5.

Absorption acoustique (EN ISO 354)

0.60/Class C (à plat), 0.70/Class C (plié). **Airflow** 678 Pa s/m. **Normes au feu:** AS/NZS 1530.3. BS 5852 Crib 5. BS 5852 Part 1. BS 5867 Part 2 Type B. EN 1021-1/2. EN 13501, C-s1, d0 collé. GB 50222 avec traitement. IMO FTP Code 2010:Part 8. NF D 60 013. NFPA 260. SN 198 898 5.3 avec traitement. UNI 9175 11M. US Cal. Bull. 117-2013. ÖNORM B1 / Q1. (La copie du compte rendu des tests est disponible sur demande).

Entretien Voir les symboles ISO. Repassage sans vapeur.

IT

Destinazione d'uso Rivestimento per imbottiti casa e contract.

Caratteristiche 100% lana vergine. Altezza circa 150 cm. Peso circa 840 gr/mtl. Tinto in pezza. Nei colori chiari possono essere presenti fibre di tonalità scure. Possibili differenze per colore.

Cimosa ↔

Abrasion: Circa 45.000 cicli/metodo Martindale EN 12947. **Resistenza alla luce** (ISO) 5-7. **Pilling** (EN ISO) 3. **Resistenza allo sfregamento** (ISO) condizione a secco 4-5, condizione umido 3-5. **Absorbimento acustico** (EN ISO 354) 0.60/Class C (tenda a pannello (tesa)), 0.70/Class C (tenda arricciata). **Airflow** 678 Pa s/m. **Ignifugazione:** AS/NZS 1530.3. BS 5852 Crib 5. BS 5852 Part 1. BS 5867 Part 2 Type B. EN 1021-1/2. EN 13501, C-s1, d0 incollato. GB 50222 trattato ignifugo. IMO FTP Code 2010:Part 8. NF D 60 013. NFPA 260. SN 198 898 5.3 trattato ignifugo. UNI 9175 11M. US Cal. Bull. 117-2013. ÖNORM B1 / Q1. (Disponibile copia del test).

Manutenzione Per favore seguire simboli ISO. Stirare senza vapore.

ES

Aplicación Oficinas, hoteles, instituciones, uso doméstico.

Descripción 100% lana virgen. Anchura aprox. 150 cm. Peso aprox. 840 gr/ml. Teñido a la pieza. En los colores claros puede haber fibras de otro color. Posibles variaciones de color.

Filo ↔

Resistencia al desgaste: Aprox. 45.000 ciclos según el método Martindale EN ISO 12947.

Resistencia a la luz (ISO) 5-7. **Relleno** (EN ISO) 3. **Solidez al frotamiento** (ISO) seco 4-5,

mojado 3-5. **Absorción acústica** (EN ISO 354)

0.60/Class C (estor), 0.70/Class C (cortina).

Airflow 678 Pa s/m. **Resistencia al fuego:**

AS/NZS 1530.3. BS 5852 Crib 5. BS 5852 Part 1.

BS 5867 Part 2 Type B. EN 1021-1/2. EN 13501,

C-s1, d0 adherido. GB 50222 con tratamiento.

IMO FTP Code 2010:Part 8. NF D 60 013. NFPA

260. SN 198 898 5.3 con tratamiento. UNI 9175

11M. US Cal. Bull. 117-2013. ÖNORM B1 / Q1.

(Copia del informe de ensayos disponible).

Mantenimiento Consulte los símbolos ISO.

Planchar sin vapor.

JP

用途 オフィス、ホテル、各種施設、住宅インテリア。

詳細 100% ニューウール。幅：150 cm。重量：1m

あたり約 840 g。製品染め。明色の場合異質繊維

が混在する場合があります。色彩ニューアンスに多少の違い

が生じる可能性あり。

耳、ふち ↔

テスト

磨耗: マーチンデール法により摩擦運動約 45,000

回。EN ISO 12947. **色褪せ保証:** (ISO) 5-7. **ピリング**

(EN ISO) 3. **摩擦保証:** (ISO) 乾燥状態 4-5、濡れた

状態 3-5. **吸音率** (EN ISO 354) 0.60/Class C (パ

ネル状)、0.70/Class C (ドレープ状)。**気流:** 678 Pa

s/m. **耐炎性:** AS/NZS 1530.3. BS 5852 Crib 5.

BS 5852 Part 1. BS 5867 Part 2 Type B. EN

1021-1/2. EN 13501, C-s1, d0 耐火性レベル。特殊耐

炎処理を行うことにより、GB 50222 に到達可能。

IMO FTP Code 2010:Part 8. NF D 60 013.

NFPA 260. 特殊耐炎処理を行うことにより、SN 198

898 5.3 に到達可能。UNI 9175 11M。US Cal. Bull.

117-2013. (ÖNORM B1 / Q1. テストレポートのコピー

入手可能。)

手入れ

ISO シンボル参照。アイロンはスチームなしでかけてく

ださい。

CN

适用范围 办公室, 宾馆酒店, 公共设施, 居家使用。

成分 100% 羊毛。幅宽59英寸(150cm)。重量840

克/延米, 匹染色面料。浅色面料可能会有外来纤维。

颜色可能稍有色差。

图纹方向 ↔

马丁代尔法约45,000转。EN ISO 12947. **光照色**

牢度 (ISO) 5-7. **起毛起球** (EN ISO) 3. **摩擦色牢**

度 (ISO) 干燥4-5, 湿3-5. **吸声系数** (EN ISO

354) 0.60/Class C (隔帘), 0.70/Class C (一般

窗帘使用)。 **气流阻力** 678 Pa s/m. **阻燃性:** AS/NZS

1530.3. BS 5852 Crib 5. BS 5852 Part 1. BS

5867 Part 2 Type B. EN 1021-1/2. EN 13501, C-s1,

d0 防火等级。特别耐火处理时GB 50222 可以满足。

IMO FTP Code 2010:Part 8. NF D 60 013. NFPA

260. 特别耐火处理时SN 198 898 5.3 可以满足。

UNI 9175 11M. US Cal. Bull. 117-2013. ONORM

B1 / Q1. (可提供测试报告副本)。

维护 请参照ISO标志。可熨烫但要避免蒸汽。



10 year warranty



Quality and environmental system accreditation according to ISO 9001 and ISO 14001.

*ACT® Registered Certification Marks

Encouraging the use of sustainable fibres. Durable and high quality. Hazardous substances restricted.

Contact and further information www.kvadrat.dk

US contact info: 1-800-620-9309