

W^{AVE}ERLEY

Openness
Factor

2%

SilverScreen®

Metalised Screen Fabric

SilverScreen®

Highest performing, reflective metallised fabric which substantially reduces heat and glare.

Applications



Roller blinds



Panel blinds

Properties



Thermal comfort



Metalised backing



Flame retardant



Visual comfort



Easy to clean



Tear resistance



Through visibility



Fabric can be joined



Can railroad

Product Data

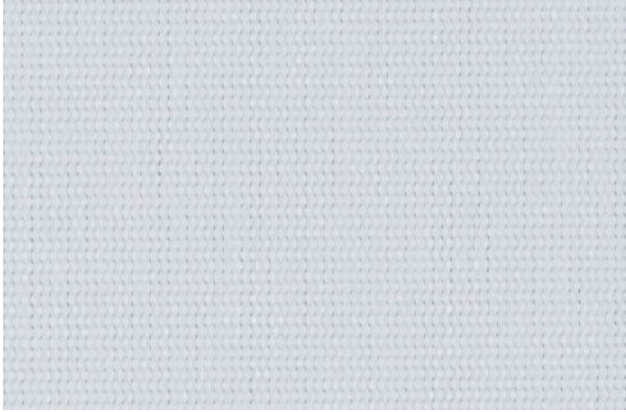
Composition	PVC 64%, glass 36%
Openness factor	2%
Widths	2000mm, 2800mm
Thickness	0.46mm
Weight	400gsm
Fire rating	EN 13501-1 C-s3,d0; BS 5867 part 2 type B; NFP 92503 M1; NFPA 701; AS/NZS 1530.3 (0-0-0-4)
Cleaning	Wipe clean with a damp cloth

Thermal Control Values

Colour	Openness	Code	Tv	Ts	Rs	As
White	2%	202ED01	3%	3%	85%	12%
Black	2%	202EB01	2%	2%	85%	13%
Dark Grey	2%	202EB02	3%	3%	85%	12%
Steel Grey	2%	202EC02	3%	3%	85%	12%
Light Grey	2%	202ED03	3%	3%	85%	12%
Bronze	2%	202EB03	3%	3%	85%	12%
Beige	2%	202ED02	3%	3%	85%	12%
Dark Beige	2%	202ED04	3%	3%	85%	12%

Glare Control Tv = % of visible light transmitted through fabric

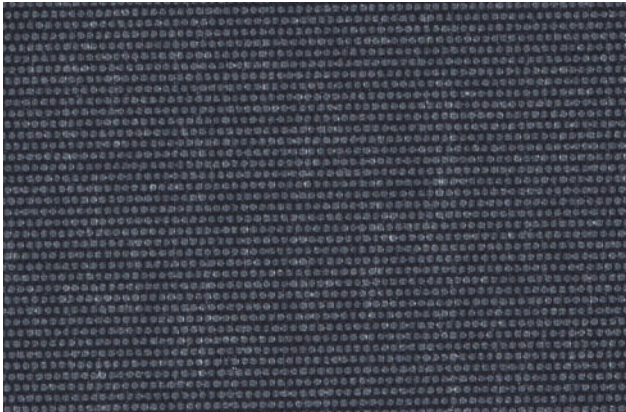
Thermal Control As = % of solar energy absorbed by fabric Rs = % of solar energy reflected by fabric
Ts = % of solar energy transmitted through fabric



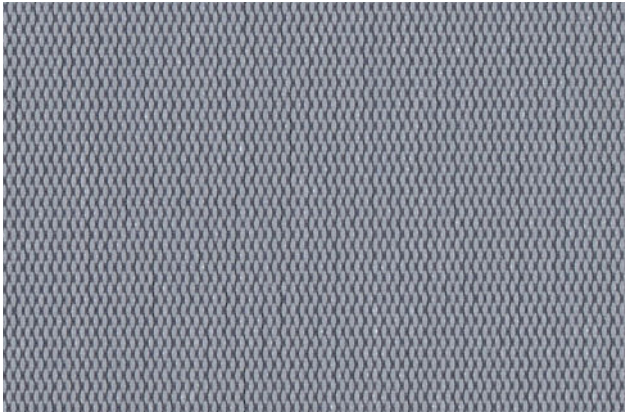
White



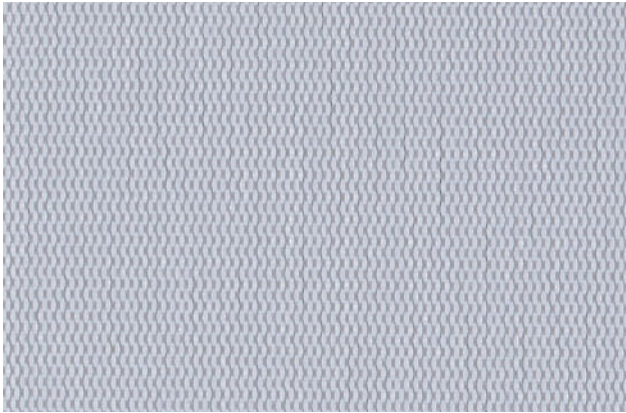
Black



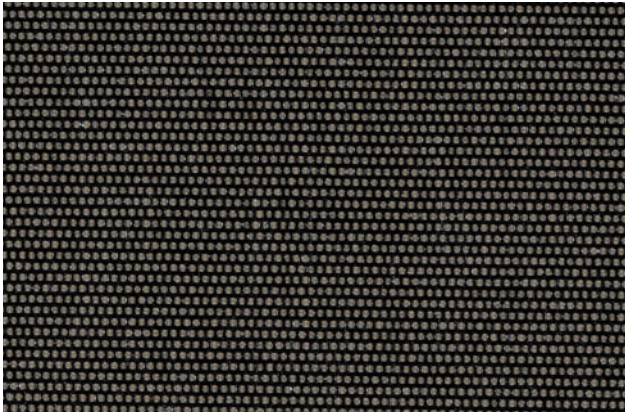
Dark Grey



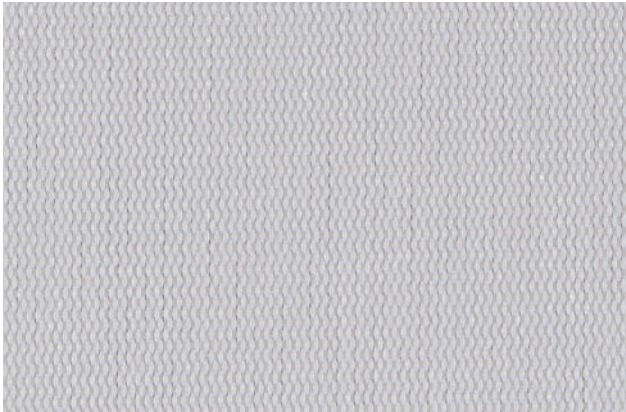
Steel Grey *



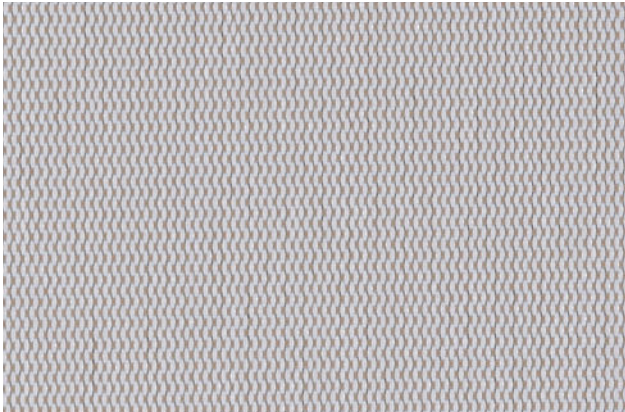
Light Grey



Bronze *



Beige



Dark Beige *

* Minimum order quantities will apply to these colours

For further information, contact our dedicated helpline
☎ 01252 737973 ✉ hello@waverley.co.uk 🌐 waverley.co.uk

SilverScreen®

Waverley's range of shade fabrics facilitate environmental accreditations such as LEED, BREEAM, SKA and The WELL Building Standard.

Accreditations

Our fabrics have been rigorously tested and awarded with various accreditations as listed below

Health

Health and wellbeing are Waverley's biggest priority and we pride ourselves on manufacturing responsibly, while also ensuring ethical sourcing across our range.

Environmental Responsibility

At Waverley, we understand the importance of taking responsibility for the effect we have on the environment and the need to reduce our carbon footprint. HPD available for this fabric.



W^AVERLEY

Waverley Contract and Supply Limited, Rowan House, Guildford Road Trading Estate, Farnham, GU9 9PZ

01252 737973 hello@waverley.co.uk waverley.co.uk